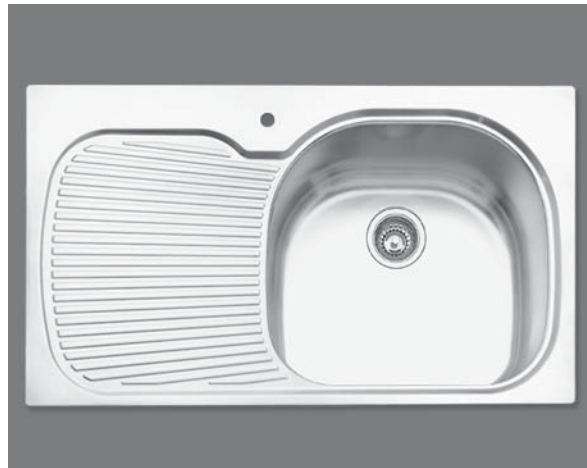




www.oliverisinks.com



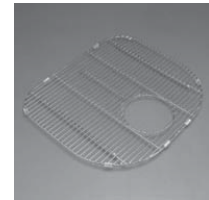
Model No:
882-1
TOP MOUNT SELF RIM SINK



INCLUDED
ACCESSORIES

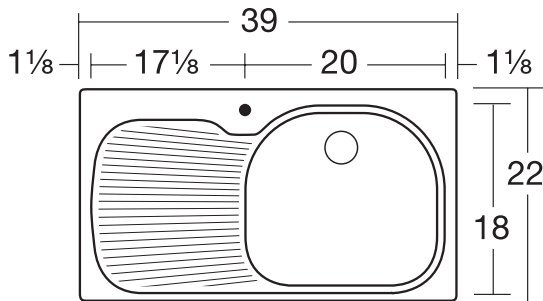


AC09 Basket Waste x 1



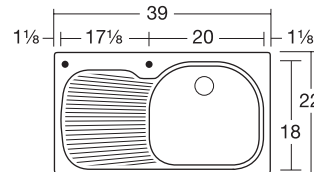
AC80 Basin Protector

Model No: **882-1**
DIMENSIONS

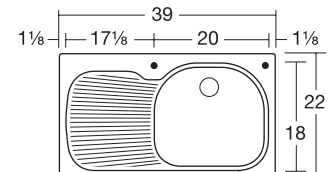


Super Basin
20 x 18 x 10" deep
12.7 Gallon Capacity

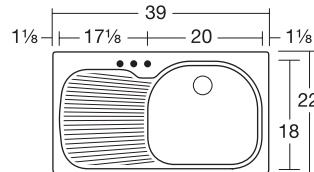
Faucet Tapping Guide: OPTIONAL



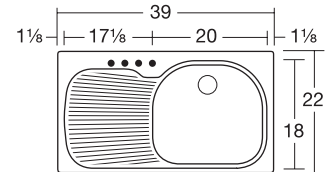
882-1-1L
OPTIONAL



882-1-1R
OPTIONAL



882-3
OPTIONAL



882-4
OPTIONAL



Undermount CAD files (DXF & DWG format)
can be downloaded from our web site
www.oliverisinks.com

MATERIAL	CONSTRUCTION	SHIPPING WEIGHT	INSTALLATION METHOD	CABINET
Stainless Steel 304 Grade 18 Gauge	Individual bowl seam welded into rim	(Packed) 33lb	Includes Template and Installation Clips Designed to be under-mounted into a solid surface bech top	Minimum 27"



Head Office &
Manufacturing Plant
Tasman Sinkware Pty Ltd
60 Home Ave, Regency Park
South Australia 5108, AUSTRALIA

Tasman Sinkware
North America
1230 Railroad St

Manufactured in Australia
to highest quality standards
Tasman Sinkware is Quality
Endorsed to ISO 9001-2000