



Model No: 880U

800 Series UNDERMOUNT SINK

Product Specifications

www.oliverisinks.com

MATERIAL

Stainless Steel
304 Grade
18 Gauge

CONSTRUCTION

Individual bowl

SHIPPING WEIGHT

(Packed)
18.0 lb

INSTALLATION METHOD

Designed to be undermounted in a solid surface top

CABINET

Minimum
24"

WARRANTY

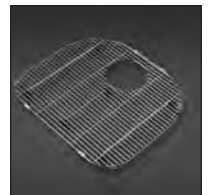
All Oliveri sinks carry Tasman sinkware's Lifetime Limited Buyer Warranty



INCLUDED ACCESSORIES

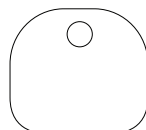
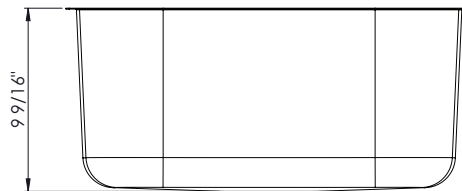
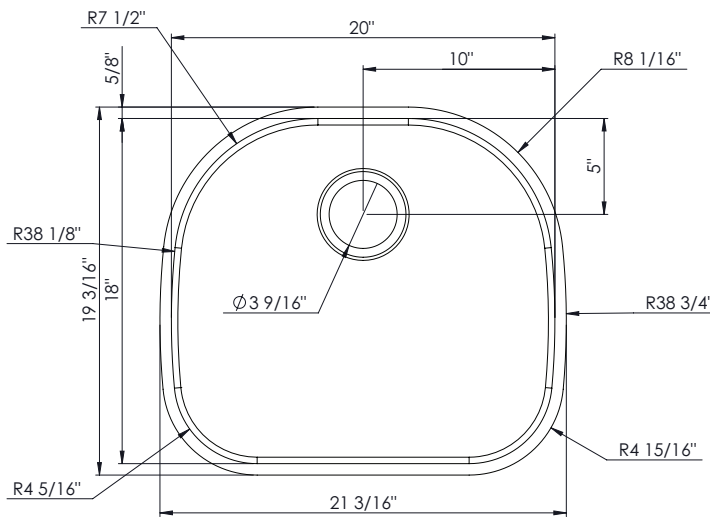


AC09 Basket Waste x1



AC80 Basin Protector

Model No: 880U SINK DIMENSIONS



Super Basin
20 x 18 x 9 1/2" deep
12.7 Gallon Capacity

Undermount CAD files (DXF & DWG format) can be downloaded from our web site www.oliverisinks.com



Head Office and Manufacturing
Tasman Sinkware Pty Ltd
51 Naweena Rd. Regency Park
South Australia, 5010, AUSTRALIA
Tasman Sinkware

North America
1230 Railroad St
Corona CA 92882
northamerica@oliverisinks.com

Project / Customer Name: _____

Approval: _____

Date: _____